

EQUIPMENT SCHEDULE			
MARK	EQUIPMENT NUMBER	DESCRIPTION OF EQUIPMENT	REMARKS
A01	2	DRINK TOWER 23 x 23	
A02	2	CARBONATOR	
A03	1	BAG N BOX RACK	
A04	1	BULK CO2 TANK	ON SHELF @ 48" A.F.F.
A05	2	ICED TEA DISPENSER	
A06	1	COFFEE BREWER	
A07	1	COFFEE WARMER	
B01	120/Y/3	CARPET	
B02	1	CARPET/TILE TRANSITION STRIP	
B06	1	SILK PLANT PACKAGE	
C01	--	CUP DISPENSER	
C02	4	SOAP DISPENSER	KITCHEN / TOILET
C03	1	TOWEL DISPENSER	
C04	2	NAPKIN DISPENSER	
C05	1	SOUFFLE CUP DISPENSER	
C07	3	TOILET TISSUE DISPENSER	
C11	5	FRY CARTON DISPENSER	
C13	3	PORTION PACK DISPENSER	
C15	2	CONDIMENT PUMP	
D01	3	POS MONITOR	
D02	4	POS TERMINAL	
D06	1	WIRELESS HEADSET	
D07	1	TIME CLOCK	
D08	1	MULTI-PRODUCT TIMER	
D09	1	GRILL TIMER	
D12	1	TV-VCR	
E06	1	FRY DUMP CABINET	
E08	1	COFFEE COUNTER	
E09	1	DRIVE-THRU DRINK COUNTER	
E11	1	CHANGE WINDOW SHELF	
E12	1	DRIVE-THRU ASSEMBLY COUNTER	
E14	1	FRONT COUNTER	
E15	1	COOKCENTER	
E22	1	LETTUCE CART	UNDER 2 COMP PREP SINK

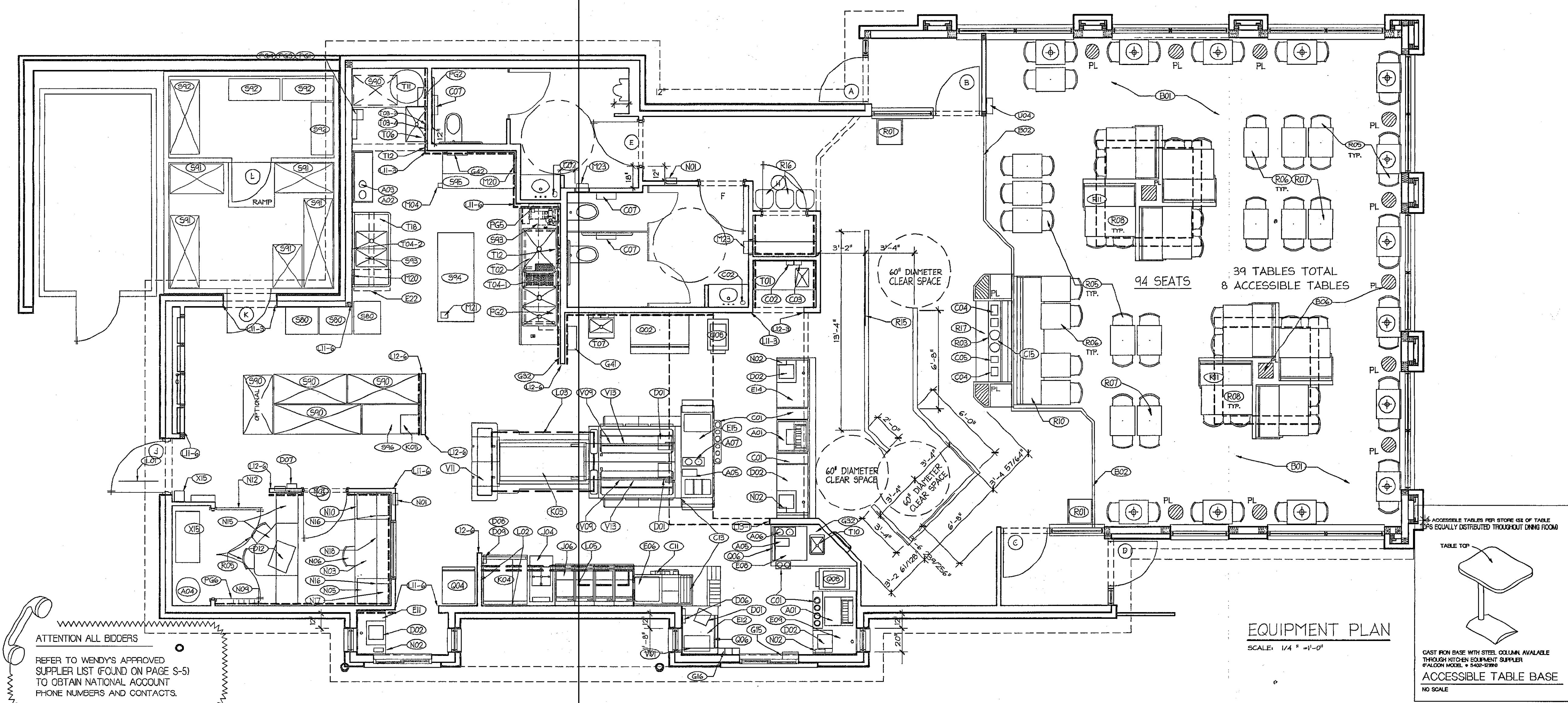
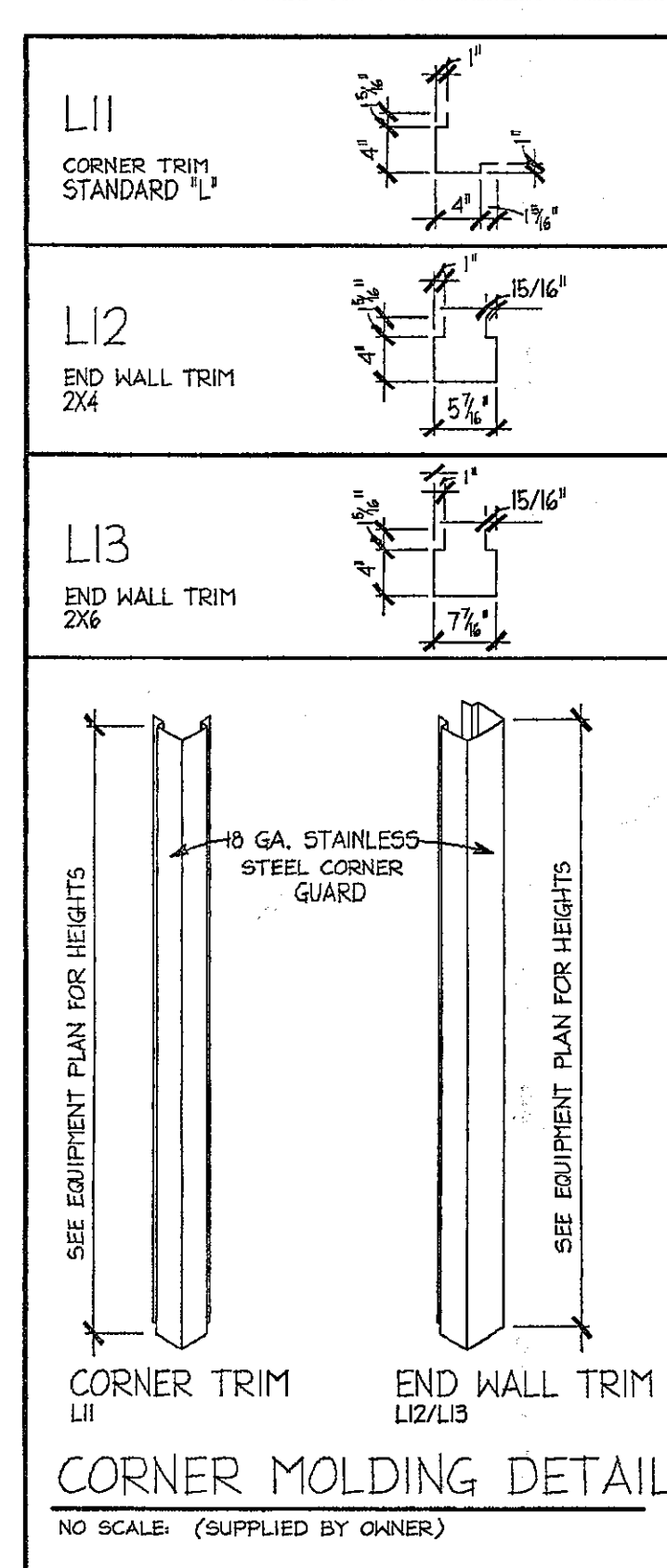
EQUIPMENT SCHEDULE			
MARK	EQUIPMENT NUMBER	DESCRIPTION OF EQUIPMENT	REMARKS
G15	1	DRINK STAGING SHELF	
G16	1	ASSEMBLY COUNTER BIN	
G22	6	GLOVE BOX HOLDER	
G40	0	CHEMICAL BOX SHELF	
G41	1	NIGHT COVER HOLDER	
G42	1	PLASTIC WRAP BOX HOLDER	
J04	1	PRESSURE FRYER	
J06	1	4 VAT OPEN FRYER	
K03	1	6' GRILL W/DOUBLE TROUGH	
K04	1	RANGE OVEN COMBO	
K05	1	BUN OVEN	
L01	1	DOOR KICK PANEL	
L02	1	ST. STL. WALL PANEL	
L03	1	GRILL HOOD (# FOR 6' GRILL)	HYAC CONTR. TO INSTALL
L05	1	FRYER HOOD (#2)	HYAC CONTR. TO INSTALL
L11	3	ST. STL. CORNER TRIM STANDARD "L" (99" LONG)	DETAIL THIS SHEET
L11	6	ST. STL. CORNER TRIM STANDARD "L" (108" LONG)	DETAIL THIS SHEET
L12	3	ST. STL. END WALL TRIM 2X4 (99" LONG)	DETAIL THIS SHEET
L12	6	ST. STL. END WALL TRIM 2X4 (108" LONG)	DETAIL THIS SHEET
L13	1	ST. STL. END WALL TRIM 2X6 (95" LONG)	OVERSIZED FOR A 2X6 WALL
M04	1	CAN OPENER	
M15	1	FIRST AID KIT	
M20	2	KNIFE HOLDER	
M23	2	HAND DRYER	
N01	3	FIRE EXTINGUISHER CABINET	SEE SHEET 15A FOR MORE INFO
N02	4	CASH DUMP BOX	
N03	1	OFFICE DESK TOP	
N05	1	MONEY SAFE	
N06	1	OFFICE CHAIR	
N09	2	COAT RACK	
N10	1	OFFICE COMPUTER RACK	
N12	1	BULLETIN BOARD	
N15	1	OFFICE/TRAINING MODULE	
N16	2	OFFICE WALL CABINET	

EQUIPMENT SCHEDULE			
MARK	EQUIPMENT NUMBER	DESCRIPTION OF EQUIPMENT	REMARKS
N17	1	PIGEON HOLE CABINET	
N18	1	OFFICE OVERHEAD SHELF	
O01	1	REMOTE CONDENSING UNIT (ROOF)	
O02	1	ICE MAKER	
O04	1	FREEZER	
O06	2	UC REFRIGERATOR	
O08	2	FROSTY MACHINE	
R01	2	SINGLE TRASH UNIT	
R03	1	CONDIMENT STAND	
R05	77	CHAIRS	
R06	31	21X24 TABLETOPS	
R07	31	21X24 TABLE BASES	
R08	8	26X42 TABLE TOP	
R10	1	BENCH SEAT (102")	
R11	2	QUAD BOOTH	
R15	1	SERPENTINE RAIL	@ 36" HIGH
R16	3	HIGH CHAIRS	
R17	2	BOOSTER CHAIRS	
S80	--	BUN RACKS	
S90	5	STORAGE UNIT	2x4 UNIT IS OPTIONAL
S91	5	COOLER STORAGE UNIT	
S92	4	FREEZER STORAGE UNIT	
S93	2	SINK MODULE	
S94	1	30"X72" WORKTABLE	
S95	1	CHILI WORK STATION	
S96	1	BREAD/BUN WORK STATION	
T01	1	TRAY WASH SINK UNIT	
T02	1	POWER SOAK (4 COMP) SINK	
T03	3	FAUCET - SERVICE SINK	
T03	4	FAUCET- BLEND CENTER	
T04	1	PRE-RINSE FAUCET ASSEMBLY- POWER SOAK SINK	
T04	2	PRE-RINSE FAUCET ASSEMBLY -2 COMP SINK	
T06	1	POP SINK	
T07	1	SPARKLE STATION (HAND SINK)	SOAP DISPENSER MOUNTED INSIDE
T09	1	2 COMP PREP SINK	

EQUIPMENT SCHEDULE			
MARK	EQUIPMENT NUMBER	DESCRIPTION OF EQUIPMENT	REMARKS
T10	1	HAND SINK	PART OF COUNTER
T11	1	HOT WATER TANK	ON SHELF
T12	2	CHEMICAL BLEND STATION	
T21	1	INSTALLATION PARTS KIT	FOR POWER SOAK SINK
U04	1	SUGGESTION BOX	SLOT @ 48" O.F.F.
V01	1	FULL SIZE WARMER	
V04	1	BUN TOASTER	
V09	2	6' BUN WARMER	
V11	2	1 DRAWER MPHIC	
V13	2	3 DRAWER MPHIC	
W21	1	SLICER	
X15	1	SHORTENING MANAGEMENT SYSTEM	2 PART SYSTEM - TANK & CADDY
PG1	1	KITCHEN BOTTLE RACK	
PG2	2	CHEMICAL STORAGE RACK	
PG3	1	FLOOR TOOL HOOKS	
PG4	1	HYDROFOAMER RACK	
PG5	1	CLEANING BRUSH HOOKS	
PG6	1	CLEANING TRAINING AIDS	
PG7	1	DINING ROOM BOTTLE RACK	

GENERAL NOTES

- ALL OF THE EQUIPMENT LISTED IS TO BE FURNISHED BY THE KITCHEN EQUIPMENT SUPPLIER UNLESS NOTED OTHERWISE.
- KITCHEN EQUIPMENT SUPPLIER PROVIDES LABOR FOR UNCRATING, ASSEMBLY AND SETTING OF EQUIPMENT.
- KITCHEN EQUIPMENT SUPPLIER WILL SUPPLY CRITICAL DIMENSIONS, PLUMBING AND ELECTRICAL SPECIFICATIONS FOR EQUIPMENT SUPPLIED BY THE KITCHEN EQUIPMENT SUPPLIER.
- ELECTRICAL AND PLUMBING CONTRACTOR TO MAKE FINAL CONNECTION TO EQUIPMENT.



wd partners

1201 Dublin Road
Columbus, Ohio 43215-1026
T 614.221.0940
F 614.221.2494
info@wdpartners.com
wdpartners.com

Columbus
Dallas
Los Angeles
Chicago
Miami

Wendy's
Wendy's Old Fashioned Hamburgers

E 2000 SPECIAL
HWY 92 @ WOODSTOCK RD.
ROSWELL, GA.

00-00-2003

Issued for Permit
Issued for Bid
Issued for Construction

REVISIONS

- 01/16/2004
- REVISION
- REVISION
- REVISION
- REVISION
- REVISION
- REVISION
- REVISION
- REVISION
- REVISION
- REVISION
- REVISION

PROTOTYPE
SPECIAL E2000/R2
ELECTRIC COOKING
ELECTRIC HEATING AND WATER

WD PROJECT NUMBER
0146.010-00

9

EQUIPMENT PLAN