

Julie Solomon  
 (678) 801-6000  
 julie@trilogygroup.net

# ROSWELL, GA

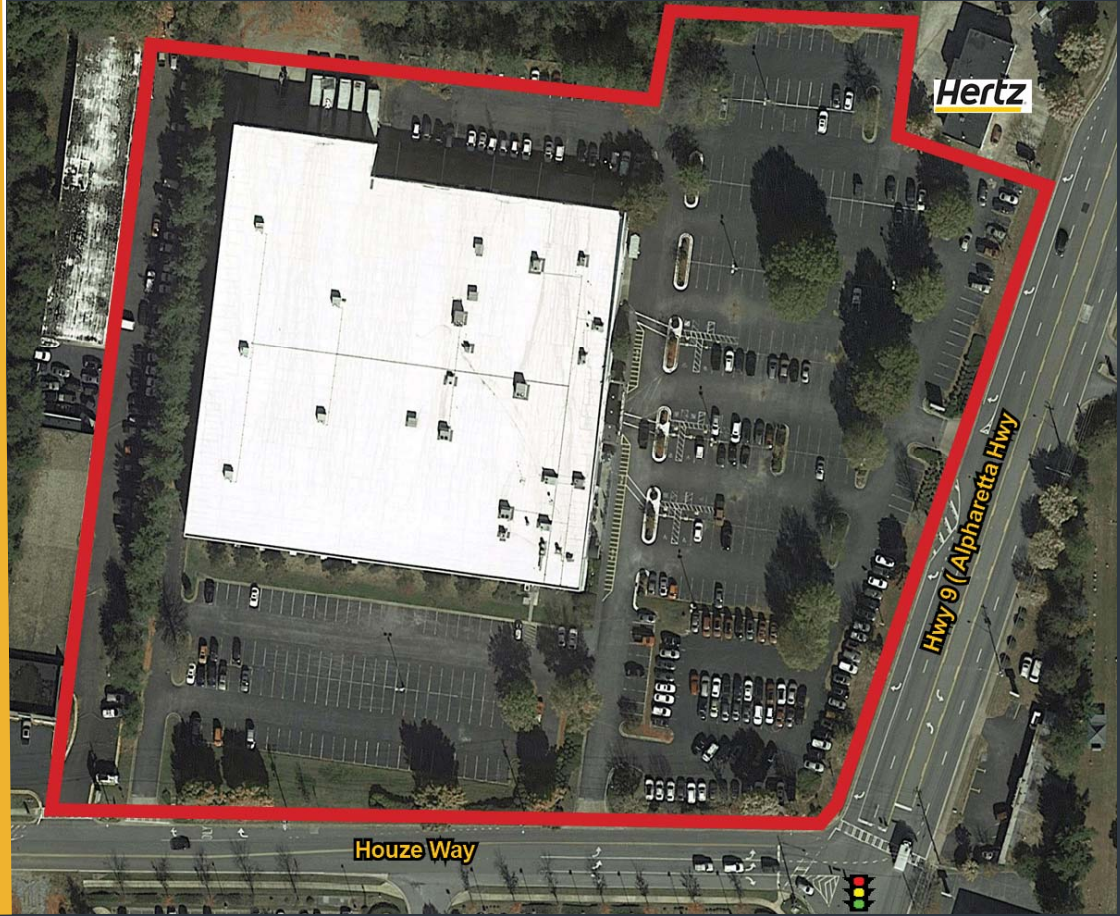
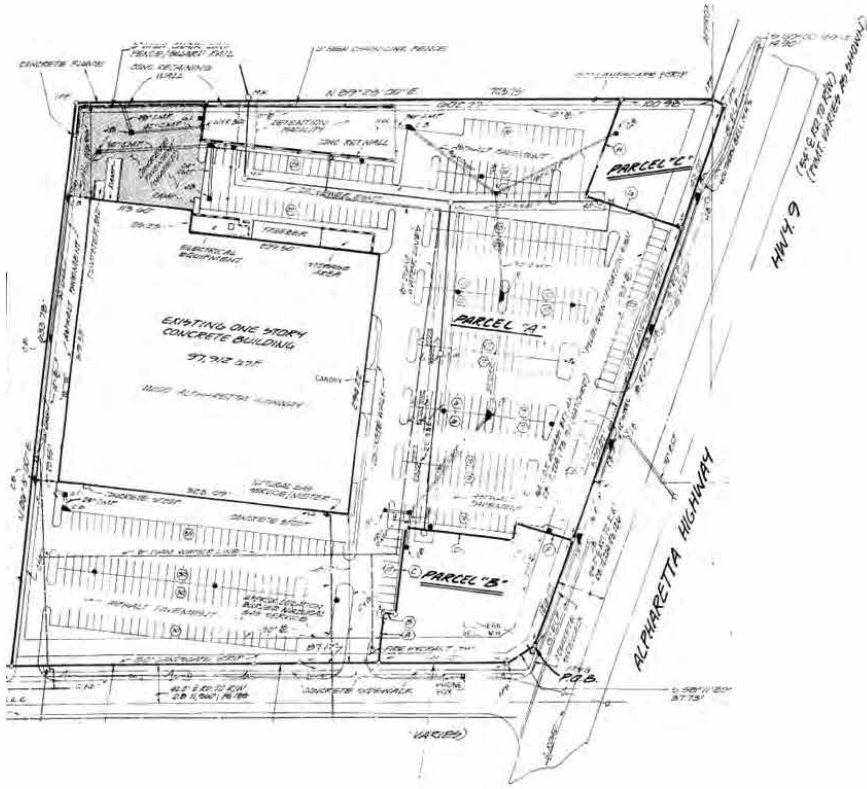
Taylor Dozier  
 (770) 801-6505  
 tdozier@trilogygroup.net

SPACE AVAILABLE



11000 ALPHARETTA HWY. | CITY OF ROSWELL, GA  
 UP TO 97,912 SF / 9.03 ACRES AVAILABLE





# AVAILABLE

## ROSWELL, GA

### Up to 97,912 sf / 9.03 Acre Lot Available

- Located in the heart of Roswell's Automotive and retail corridor
- Outstanding exposure and frontage with more than 600' of frontage on Alpharetta Highway and 550' of frontage on Houze Way
- Excellent ingress/egress to Alpharetta Highway and Houze Way
- Building in excellent condition –approximately 300' width with 325' depth
- More than 450 parking spaces



The information contained herein has been received from sources deemed reliable; however, no warranty, express or implied, is made regarding the accuracy of the information. No liability is assumed by The Trilogy Group, LLC or its agents for any errors or omissions.